



# GMT MONTHLY MEMBERSHIP PROGRESS REPORT

Results as of: 6/30/2019

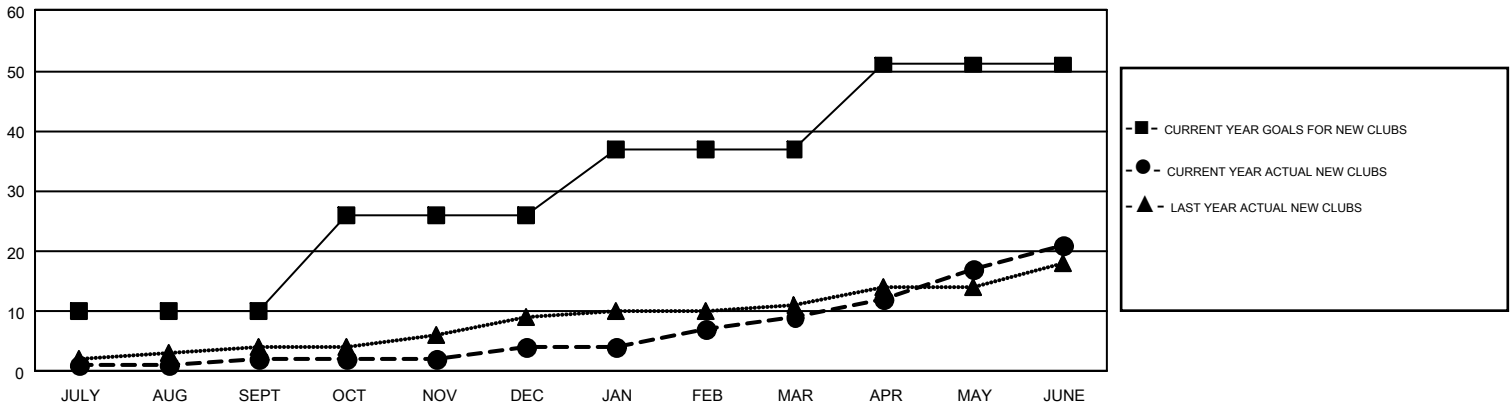
## GMT Constitutional Area 1, Group E

GMT: OPEN

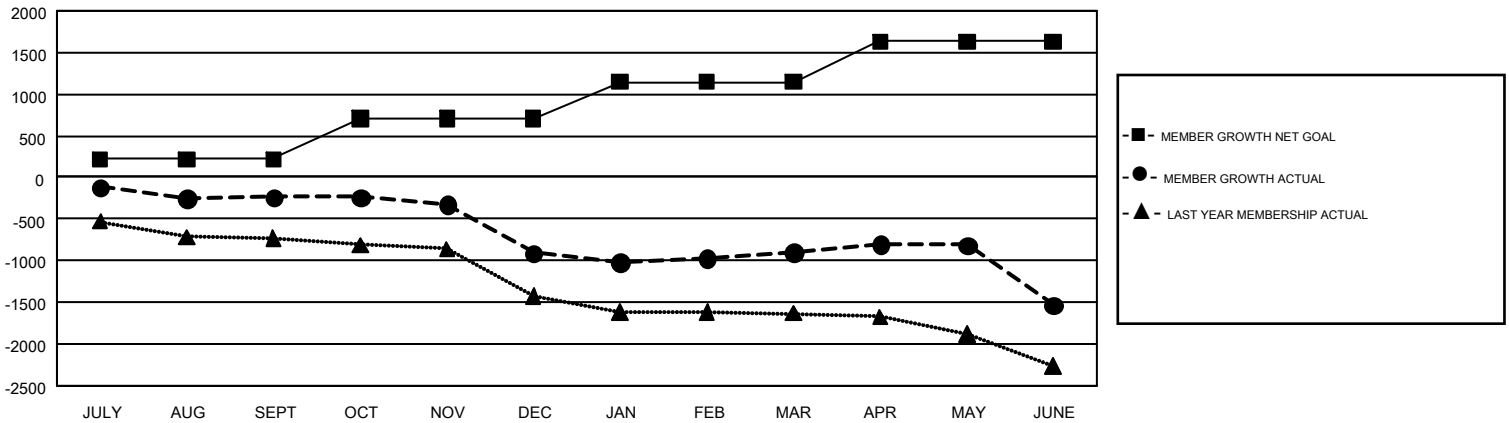
REPORT DOES NOT INCLUDE CLUBS IN UNDISTRICTED AREAS.

Clubs				Members			
RESULTS FOR 2018-2019				RESULTS FOR 2018-2019			
QUARTER	NEW CLUB GOAL	NEW CLUBS	DROPPED CLUBS	QUARTER	MEMBER GROWTH NET GOAL	MEMBER GROWTH ACTUAL	DROPPED MEMBERS ACTUAL (including transfers)
JULY/AUG/SEPT	10	2	17	JULY/AUG/SEPT	216	941	1,001
OCT/NOV/DEC	16	2	19	OCT/NOV/DEC	494	963	1,511
JAN/FEB/MAR	11	5	5	JAN/FEB/MAR	434	1,105	996
APR/MAY/JUNE	14	12	16	APR/MAY/JUNE	489	1,532	2,024

GOALS AND ACTUAL NEW CLUBS CUMULATIVE



GOALS AND ACTUAL MEMBERS CUMULATIVE



DROPPED CLUBS: 57	938 CLUBS OF 1,555 ADDED 1 OR MORE NEW MEMBERS	<u>GENDER DISTRIBUTION</u>
<u>DROPPED MEMBERS</u>		MALE                    22,144 (62.56%)
DECEASED                    608		FEMALE                    13,251 (37.44%)
CLUB CANCELLED                353	<a href="#">CLICK HERE FOR CUMULATIVE MEMBERSHIP DATA</a>	TOTAL FAMILY UNIT MEMBERS                    6,613
OTHER                            4,565		FAMILY MEMBERS PAYING HALF DUES                    3,397
TOTAL                              5,526		